

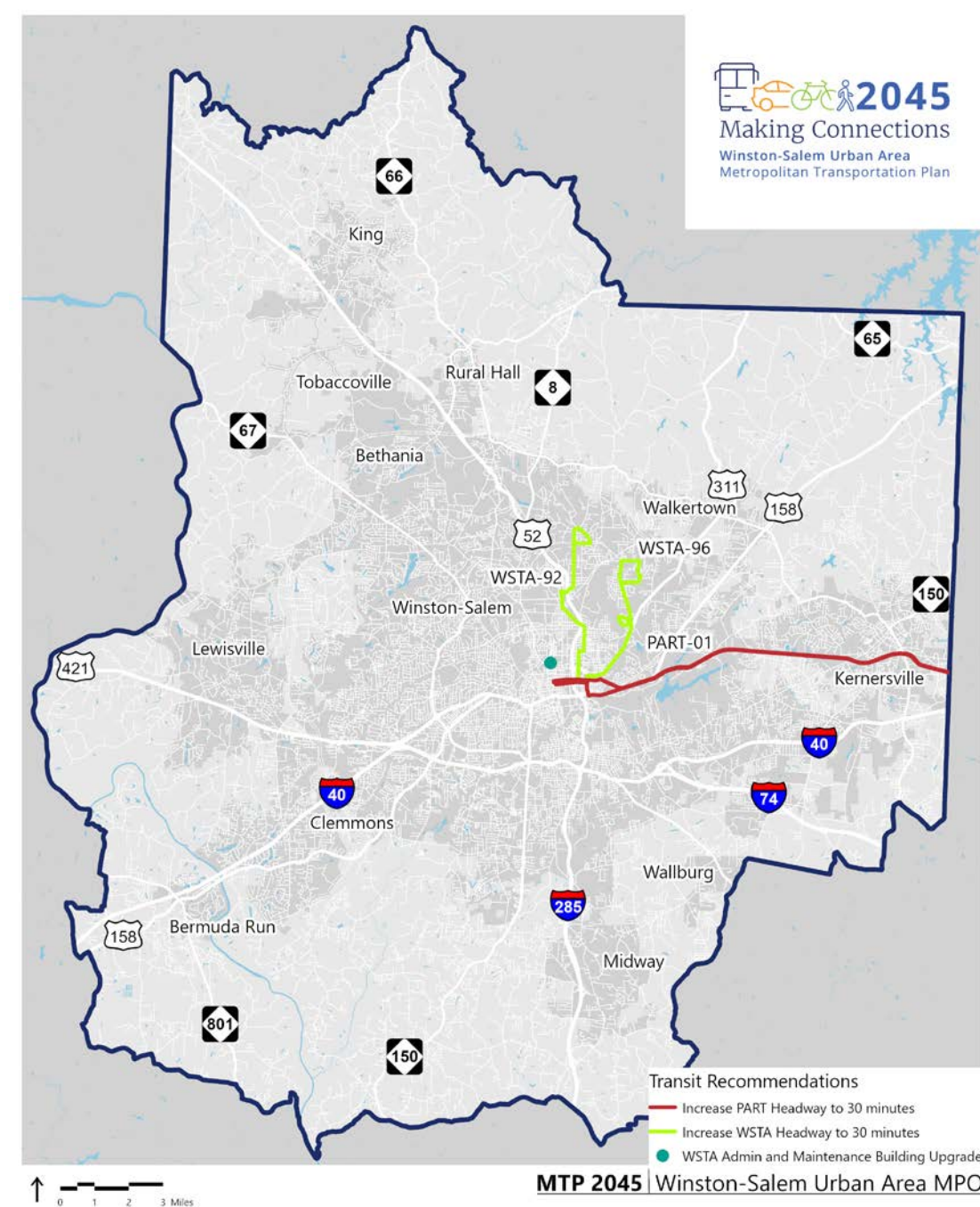
Draft MTP Transit Recommendations

Where do we focus our transit investment

August 2020

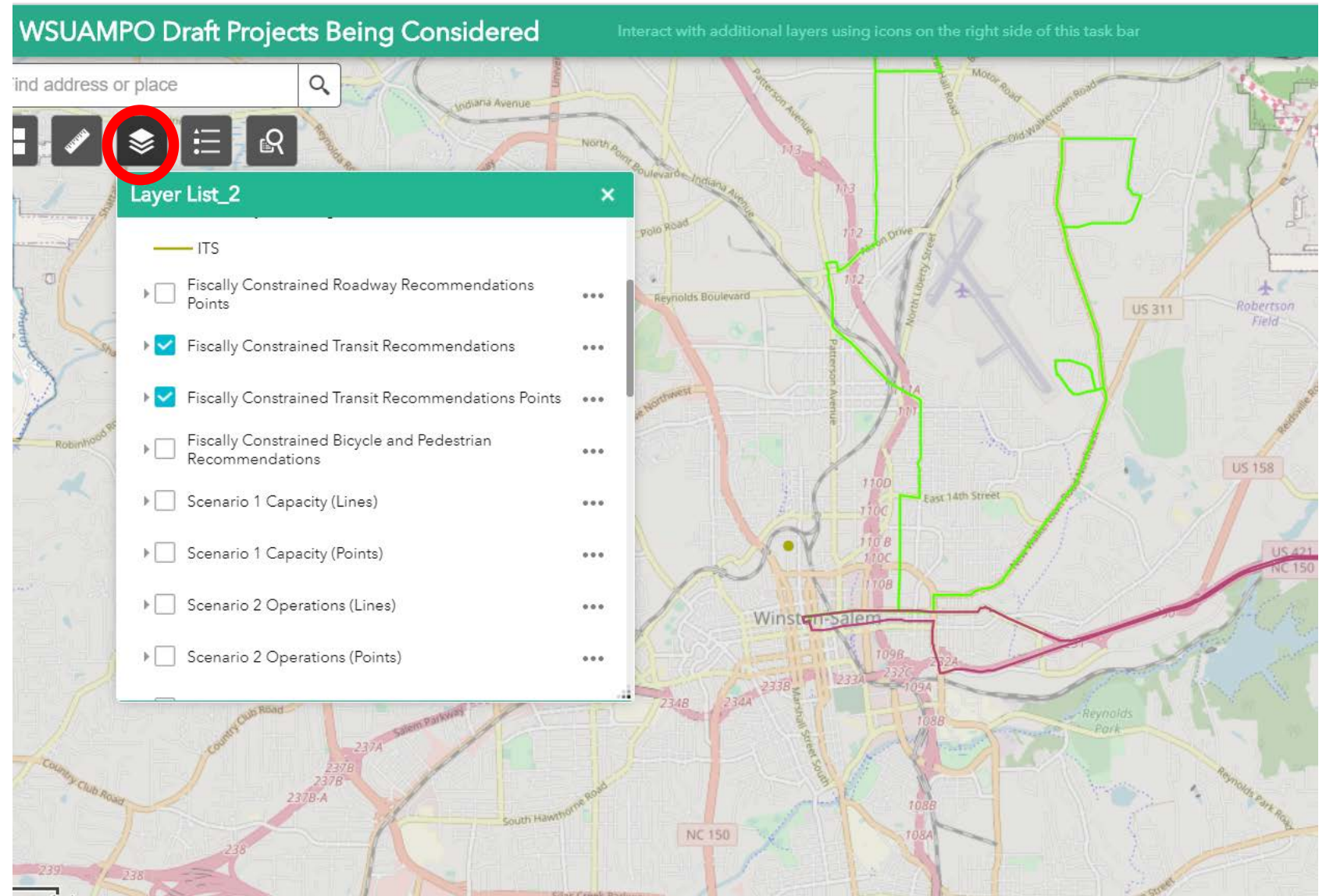
Draft MTP Transit Priorities-Fiscally Constrained List

- Improve headways to every 30 minutes on WSTA routes 96 and 92
 - Second and third highest ridership routes (Oct. '19)
- Increase service along regional routes:
 - Route1 (Winston-Salem Express)
- Upgrades to WSTA Administration and Maintenance Facility



Interactive Map at bit.ly/WS2045MTP

- Select Fiscally Constrained Transit (lines and points) in the Layer list



Draft MTP Transit Policy and Planning Priorities

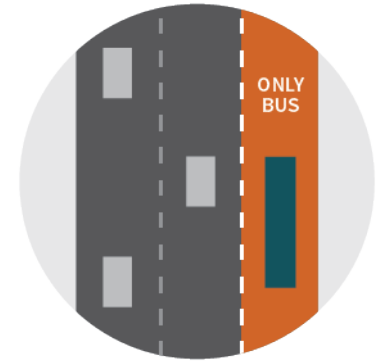
- Explore the potential of a Forsyth County ¼ cent sales tax referendum for transit.
- Enhance Transportation Demand Management (TDM) strategies to:
 - Reduce single occupant vehicle trips
 - Promote walking/ biking/ transit
 - Promote regional coordination
- Plan for improved fare collection including:
 - Investigate mobile fare collection
 - Regional fare coordination
 - Fare free transit pilot
- Continue planning for Winston-Salem Streetcar
- Plan for improved access to transit including identifying and prioritizing
 - Sidewalk gaps
 - ADA compliance
 - Bicycle facility connections



Streetcar Image: WABE.org

Draft “Unfunded” Transit Priorities

- Improve headways on additional WSTA routes to every 30-minutes as funding becomes available
- Implementation of Transit Emphasis Corridors (15 minute or better headways, queue jump lanes, traffic signal priority)
 - Between Hanes Mall and Downtown, Hanes Mill Walmart and Downtown, NC 150 (Peters Creek Pkwy) Walmart and Downtown, and Smith Reynolds Airport and Downtown
- Increase service along regional routes:
 - Route 5 (NC Amtrak Connector)
- Restore regional transit service to Clemmons
- Pilot micro transit solutions to replace coverage routes or to extend coverage area of service
- Continue planning for Winston-Salem streetcar/urban circulator to connect WFU, Wake Forest Innovation Quarter and WSSU
- Davidson County Transportation
 - Implement new route between Welcome and Lexington (potential to connect with WSTA)
 - Implement new route between Salisbury and Lexington
 - Acquire electric bus



Next steps

- Please fill out the survey!
- Public transit break-out webinar session scheduled for Thursday, September 3rd 5:30-6:30 PM
- Links to both at <http://www.wsmtupdate.com/get-involved.htm>
- Plan expected to be adopted September 17, 2020

